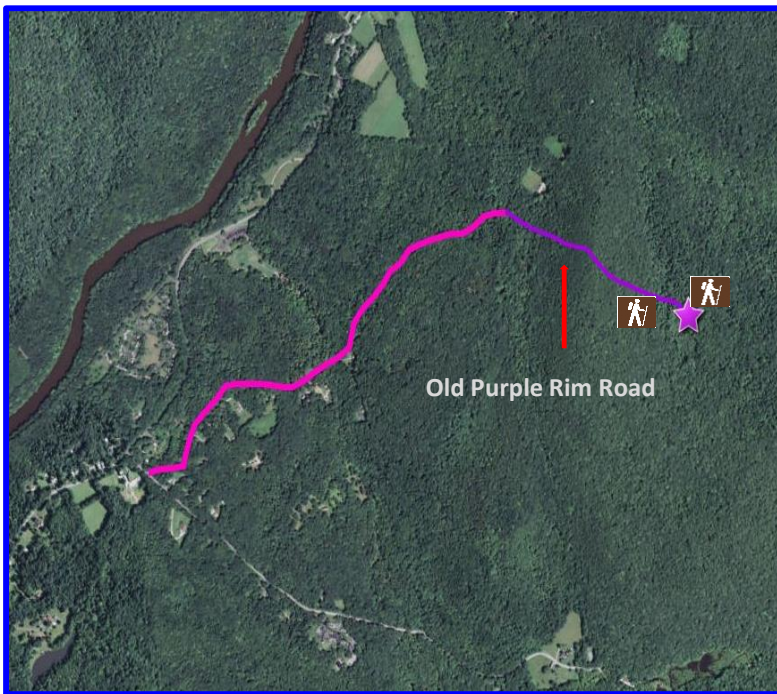


Section 6

Audrey and Robert Tobin Preserve

Difficulty: Easy to Moderate



This is a 241 acre preserve above Kent Falls State Park that was acquired by the Vermont Department of Conservation. The Preserve incorporates the intersections of Cornwall, Warren and Kent. Travel parts of the old Purple Rim Road through-way, pass among hemlock groves, mountain laurel, ridgetops, rocky-outcrops, wetlands and an extensive stream network system. Cerulean Warblers have been observed on the property since avian research was initiated in 2014. Louisiana Waterthrush, Scarlet Tanagers, and Wood Thrush are also very common on the property. Two blazed trails (Orange and Green) are located within the Preserve. **PLEASE TAKE BLACK BEAR AND TICK PRECAUTIONS.** Finally this is an active avian research site so please do not disturb flagging, string or poles which you may see during your travels

DIRECTIONS

From Route 7 in Kent (Monument and Patco Gas Station):

- Travel **NORTH** about five miles on Route 7 until you come to **Carter Road** (just before Kent Falls) on your right.
- Turn Right, then make a quick left turn onto **Dugan Road**.
- Follow **Dugan Road** which turns into the unmarked **Old Purple Rim Road** approximately one mile until you come to the end (a turn around about a half-mile past the KLT Kiosk)



AUDREY & ROBERT TOBIN PRESERVE 10



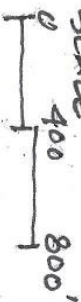
KEY

P PARKING

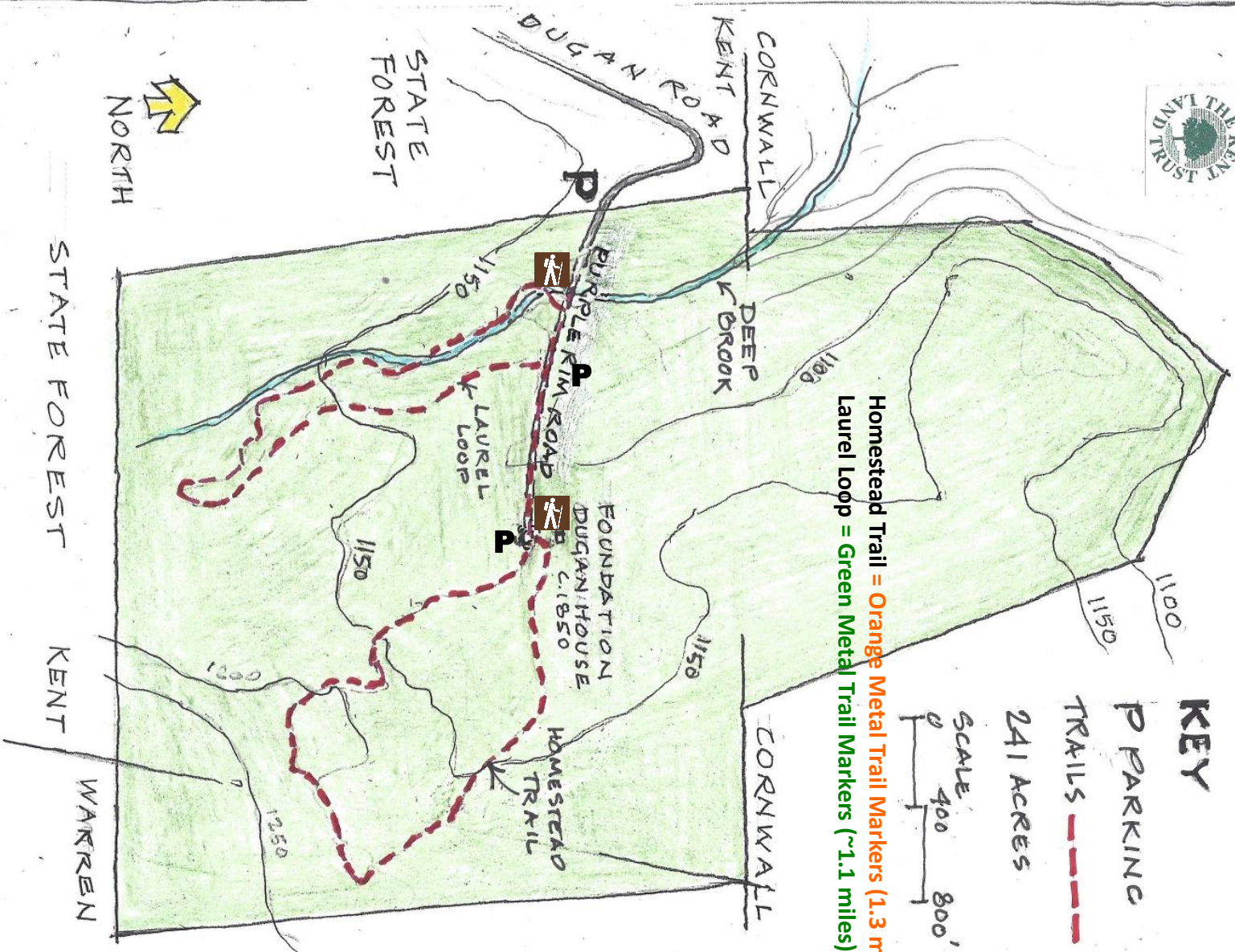
TRAILS - - - - -

241 ACRES

SCALE



Homestead Trail = Orange Metal Trail Markers (1.3 miles)
Laurel Loop = Green Metal Trail Markers (~1.1 miles)



STATE FOREST

KENT

WARREN